



Roads with low stability witch contains larger stones and solid mountain in the top 250 mm of the road konstrukstction.



Tractor with the crushermill mounted.



Crushermiller in action.



The crushermilller handles the materiale
250 mm into the road.



Soil problems in the road.



Asphaltmiller in action.



The asphaltmiller and the crushermiller work together and the traffic can still pass.





Mixing Lignin into the road.



This example showes the effect of the Dustex.





The new materials needs to be compacted and documented.



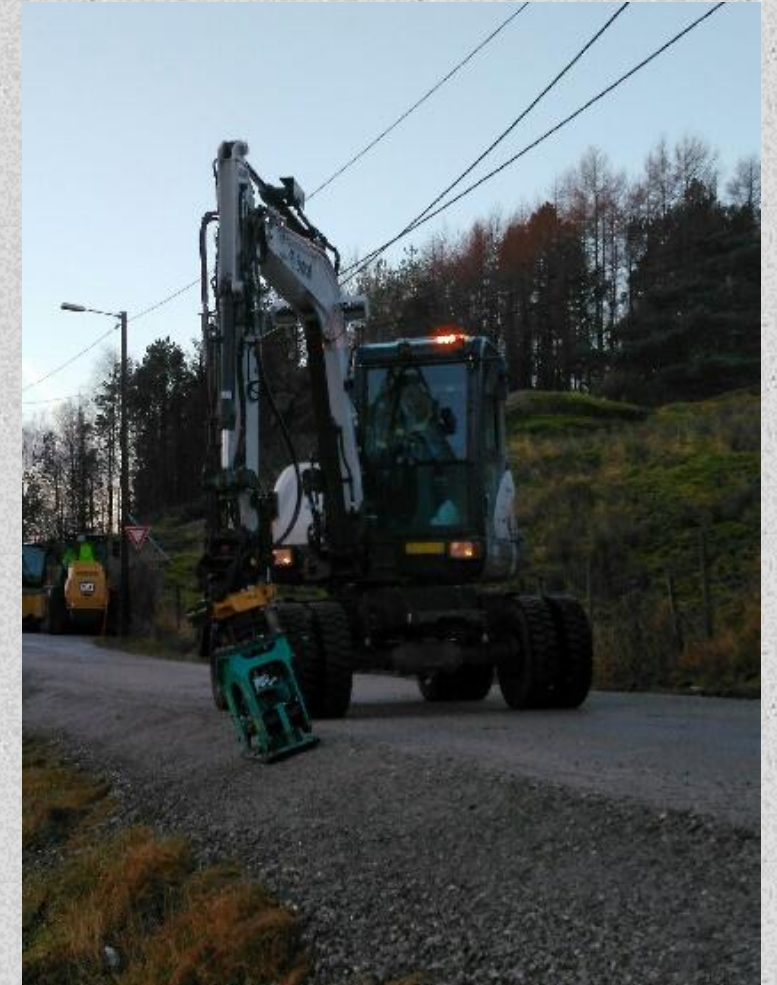
The material needs to be graded.



Quick movie step by step



Edge stabilization in action.



Road witch is stabilized, and ready for asphalt.



After 2- 6 weeks the road is ready for asphalt .



Ved spørsmål ta kontakt med

Lloyd

Tlf: **+47 482 71 544**

Mail: lloyd@crusher.no

Lars

Tlf: **+47 990 78 870**

Mail: lars@crusher.no

